



LEONARDSLEE  
LAKES & GARDENS

# SPRING



Members get

**FREE  
TICKETS**

To Illuminated

*Ts & Cs apply*



With over **200 years of history**, Leonardslee Lakes & Gardens stands as a timeless sanctuary nestled in the heart of the West Sussex. The gardens, brimming with vibrant hues and distinctive charm year-round, come alive in spring showcasing one of the United Kingdom's most expansive and remarkable collections of **rhododendrons**.

For families seeking an immersive experience, Leonardslee offers an array of activities suitable for all ages, ensuring there's always something to **captivate every visitor**. Join us as we continue the journey of restoration, with our dedicated garden team bringing the **historic charm of Leonardslee** back to life.



## ROCK GARDEN

**Built around 1890** by the renowned Rock Garden designers, **Pulham & Sons**, the Rock Garden (**M**) becomes alive with vibrant colour each spring.

### Highlights include:

- Kurume azaleas
- Rhododendron 'Amoenum'
- Dwarf forms of Norway Spruce, Picea abies
- Impressive specimen of Azalea 'Hinomayo' - a favourite for photos!

*Rock Garden  
tours available*





We carefully manage our gardens to provide homes for wildlife and create healthy **woodland ecosystems** for our historic gardens to thrive.

**Keep an eye out for:**

- Early dragonflies and damselflies around the lakes and butterflies from mid spring
- Deer with their fawn in our Deer Park **(U)**
- Our famous wallabies and their joeys



**For bird lovers, don't miss out on spotting:**

Nuthatches, Green & Great Spotted Woodpeckers, Spotted Flycatchers, broods of Mallard Ducks and the exotic looking Mandarin Ducks.

**Visit our bird hide and share your sightings with us!**

Just by visiting you are helping us continue to look after our gardens, wildlife and important ecosystems!



Share your images with us on social media using the tag @leonardsleegardens #leonardsleegardens



## JOEY WATCH

Our little joeys are ready to meet you! These little marsupials spend their day hopping in and out of their mum's pouch as they explore the new world around them.

View them being fed daily from **12:00 - 12:15** at the **Wallaby Enclosure (Q)**.



### DID YOU KNOW?

We have both **free-roaming** wallabies and wallabies in the **maternity enclosure**.



## DAFFODILS



Bringing light and freshness to the landscape, from late **February to April**, daffodils declare that spring has arrived after a crisp winter. View **thousands of bulbs** in bloom on **Daffodil Lawn (I)** and pockets throughout the gardens as you head into the valley.



## BLUEBELLS

At its peak in **late March through to May**, the wild beauty of **Bluebell Bank (S)** will take your breath away where carpets of beautiful bluebells can be found stretching across the glade.



# OUR FAMOUS RHODODENDRONS

As we move into **May**, it is now that you can view, at their finest, our **famous collection** of **rare rhododendrons**, collected from around the world for over 200 years. In 2022 Leonardslee Lakes & Gardens was awarded **National Plant Collection status** by **Plant Heritage** for bringing a globally renowned rhododendron hybrid collection back to life.

Key highlights not to miss include the **Memorial Table (B)** and **The Dell (C)**, offering breathtaking views of the valley and gardens.

Rare hybrids include **Rhododendron 'Vulcan'**, with large, deep red flowers and dark green foliage, and **Rh. 'Loderi King George'**, boasting fragrant, pale pink flowers in abundance.



*Rhododendron  
walks available*

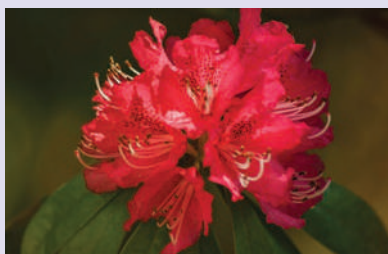
Leonardslee proudly holds National Plant Collection status, featuring 42 distinct hybrids, with 32 under threat in cultivation and 17 exclusive to our gardens. The dedication to Sir Edmund Loder's vision is evident in this extensive collection.

Keep an eye out for the rhododendrons in the collection by spotting their plaques as you explore.

## 2023 AWARD WINNERS RHS WISLEY SPRING SHOW



**Rhododendron 'Muriel'**,  
Class 35  
1st Prize



**Rhododendron argipeplum**,  
Class 29  
1st Prize



**Rhododendron schlippenbachii**  
1st Prize



**PLANT HERITAGE  
THREATENED  
PLANT OF THE YEAR**

**Rhododendron 'The Dowager'**  
People's Choice Award

**So how do we protect the rare plants in our National Collection and safeguard them for the future?** "Well, one of the projects we've set up is to micropropagate all Rhododendrons in our National Collection in conjunction with the Duchy College in Cornwall. We sent them dormant flowers buds from each specimen which they then break down into tiny tissue samples before growing them under laboratory conditions to produce exact clones of the parent plant. In due course we will be sent a number of seedlings of our rare Rhododendrons to help preserve these important plants. We can grow them on and plant out a whole new area of these plants as well as keeping some in reserve should, a huge storm or a disease outbreak damage or reduce our collection." - *Jamie Harris, Head Gardener*

**FUN FACT** | The RHS RCM Group's gift of rhododendrons, camellias, and magnolias to King Charles adds a royal touch, featuring plants intricately linked with Leonardslee: **Rh. 'Loderi King George'** and **Rh. 'Loderi Sir Joseph Hooker'**.



## MAGNOLIAS

**April** sees the beginning of many varieties of magnificent magnolias flowering across the gardens.

**Keep an eye out for:**

- Magnolia sargentiana in front of Leonardslee House **(N)**
- Magnolia sprengeri 'Diva', located behind The Clocktower Kitchen **(L)**



## CAMELLIA WALK & CAMELLIA GROVE

In late **March to May**, make your way to **Camellia Walk (P)**. Planted by Sir Edmund Loder, visitors can view outstanding displays that are over 100 years old, the oldest camellias in the gardens.

Here you can find **Camellia 'Lady McCulloch'**; an exciting variety as it flowers in multiple colours all on the same plant – ranging from white with a red stripe to pure white, deep red and bright pink.

Within the valley you can discover **Camellia Grove (T)**, where there are several hundred varieties of camellia, most of which are cultivars of Camellia japonica, which originates from Japan. This area was first planted in 1957-1958.



**Favourites include:**

- Camellia x williamsii with vibrant pink flowers
- Camellia 'Haku-rakuten', which has semi-double white flowers
- Camellia 'Donation' with beautiful pink flowers



## LODERI GARDEN (F)

Here you will find some of the oldest plants within the gardens, especially **Lodderi Hybrid Rhododendrons**.

**Highlights include:**

- Lodderi 'King George'
- Lodderi 'White Diamond'
- Lodderi 'Pink Coral'



### DID YOU KNOW?

The range of Rhododendron Lodderi was derived from a series of hybrids developed by **Sir Edmund Loder**, who once owned Leonardslee, in the early 1900s from crosses between Rh. fortunei & Rh. griffithianum. **Now recognised as a National Collection by Plant Heritage.**



## CHAMPION TREES

Be sure not to miss one of our Champion Trees, **Prunus serrulata 'Albi-plena'**, found on **Daffodil Lawn (I)**.

This huge spreading Japanese Cherry is over 100 years old and has the largest girth in West Sussex at 247cm.

In early spring, it is covered in pure-white double flowers that last just one week – so be sure not to miss them in bloom!

**Pick up a Champion Tree map at reception to spot them all!**



Tree walks  
available

## A WORLD OF NATURE & PLAY (G)










**LAUNCHING  
SPRING 2024**

**COMING SOON**

Discover a world of immersive play experiences at our **NEW** expansive play park, spanning **2500m<sup>2</sup>** and designed to captivate **children of all ages**.




-  Climb up the **5m multi-level champion tree & slides**
-  Conquer **St Leonards dragon**
-  Experience the thrill of a **32.5m zipline**
-  Play in a **miniature Leonardslee House**

-  Navigate **balancing beams**
-  Wallaby **talking tubes**
-  Swing into the fun on one of our many **swings, including baskets, cradles, and more!**

## THE CLOCKTOWER KITCHEN



Introducing a delectable shift in our café offering, **The Clocktower Kitchen (L)** has a whole new look and feel to it, offering an ambient update as we take a step closer to spring. Our chefs have crafted a menu, featuring favourites such as fish and chips, hot pies, pizza, alongside breakfast and Sunday lunch options.

# LEONARDSLEE

## Lates

Bask in **live music** as the **sun sets** over our **vibrant spring gardens.**

**BACK** for **2024** after a **sellout** first year!

**May Bank Holidays | Doors open 18:00**



**Members receive free parking and discounts to events!**

### **RHODODENDERON FESTIVAL | 27 APRIL - 9 JUNE**

Immerse yourself in the vibrant beauty of our renowned Rhododendron collection at its peak this spring! Join us for an unforgettable experience, featuring guided tours, captivating workshops, and more, all celebrating the stunning diversity of our famous rhododendrons.

**Garden entry required for non-members | Free for Leonardslee members**

### **LEONARDSLEE COMEDY CLUB | EVERY MONTH**

Back by popular demand, our quick-witted comedians are lined up for incredible evenings of stand-up comedy. **Tickets £16.50 | 10% off for Leonardslee members**

### **BACK FOR 2024 AFTER A SELLOUT FIRST YEAR: LEONARDSLEE LATES | 3 - 5 & 24 - 26 MAY**

Experience the height of spring at twilight as we open our gardens for springtime evenings. With live music, food & drink, wine tastings & more.

**Price freeze for 2024: Tickets £8 | £5 for Leonardslee members**

### **SPRING GARDEN WALKS**

Our spring walks are an opportunity for you to step inside our beautiful grounds, where our vibrant Rock Garden, blooming rhododendrons, and majestic champion trees await your exploration.

### **WORKSHOPS & MORE**

Spring into the season with our selection of seasonal workshops. From photography and wreath making to forest bathing, there is something for everyone.

View our full list of upcoming events & workshops online.  
Visit [www.leonardsleegardens.co.uk/all-events](http://www.leonardsleegardens.co.uk/all-events)





Restaurant



# Interlude

AT LEONARDSLEE GARDENS

Lunch & Dinner | Thursday - Sunday

A unique inspired Michelin Star dining experience, with a multi-course menu that changes with the seasons. With ingredients foraged directly from the 240-acre Grade I listed Leonardslee Lakes & Gardens we call home. Travel to the heart of the Sussex countryside and take a day or two to immerse yourself into our journey.



*Enhance your experience and*  
**STAY THE NIGHT**



COMING SOON



## LEONARDSLEE

FAMILY VINEYARDS

Rooted in history,  
a vineyard, a place and a legacy.

DISCOVER A TASTE OF  
SUSSEX SPARKLING WINE



*Follow our journey*

STAY

## LEONARDSLEE HOUSE



Ten bespoke rooms, each with their own individual décor and en-suite bathrooms.

0330 123 5894  
[www.leonardsleegardens.co.uk](http://www.leonardsleegardens.co.uk)

WEDDINGS AT

## LEONARDSLEE HOUSE

Discover how Leonardslee House can be exquisitely, exclusively, yours for a weekend wedding.



[weddings@leonardsleegardens.co.uk](mailto:weddings@leonardsleegardens.co.uk)  
[www.leonardsleegardens.co.uk](http://www.leonardsleegardens.co.uk)



# LEONARDSLEE LAKES & GARDENS

## A SEVEN LAKES

Our gardens are set within a tranquil valley, at the heart of a lush landscape. Play host to an array of spring loving wildlife.

## B MEMORIAL TABLE

Makes your way to the Memorial Table for one of the most spectacular views across the gardens. In memory of **Sir Edmund Loder**, the table bears the inscription "In memory of Sir Edmund Loder 1889-1920."

## C THE DELL

Don't miss the famous Dell for outstanding views across the valley. The Dell is home to a 35ft Cornish Red Rhododendron planted in the '800s.

## D CORONATION GARDEN

Planned in 1952 to mark the coronation of Queen Elizabeth II. This garden features many Rhododendron Loderi.

## E TOP GARDEN

Newly reopened, the Top Garden was the original site of a Pinetum. Planned by **Sir Edmund Loder** between 1901 and 1905, most of the trees were unfortunately lost during the great storm of 1987 that affected so much of this part of the country.

## F LODERI GARDEN

With a magical feel, this is the oldest pinetum garden, with large old rhododendron, camellia, cypripedium & hidden palm trees. Worth a detour for rhododendron enthusiasts.

## G PLAY PARK

Discover a world of immersive play experiences at our NEW expansive Play Park. Accessible & inclusive for children of all ages.

## I DAFFODIL LAWN

A carpet of golden daffodils covers the slopes of **Leonardslee** from early March. Offers a fine view across the valley towards **Mossy Ghyll Pond**.

## J DOLLS' HOUSE MUSEUM

A magical world in miniature featuring the exhibition, 'Beyond The Dolls' House'.

## M ROCK GARDEN

Created in 1900, our famous Rock Garden is one of the most beautiful areas of the gardens.

## N LEONARDSLEE HOUSE

The stunning, Italianate mansion is home to the Leonardslee House Spa, Art Gallery and Sculpture Sales.

## O ENGINE HOUSE

The Engine House once pumped water up to the top of the valley. It is a stunning spot for views across the lakes.

Seasonal refreshments are available.

## P CAMELLIA WALK

A pretty walk, noteworthy for its incredible colour and palm trees. This area includes an interesting group of plants including Japonica variegata and Peris Walehurstii.

## Q WALLABY ENCLOSURE

Make sure to visit baby baby and their mums in the wallaby enclosure.

FEEDING TIME: 12:00 - 12:15 daily

## R VINEYARD & PICNICS

Our first vines were planted in 2017. With our first English Sparkling Wines due for release in 2024.

Whilst our vines are maturing, why not enjoy the stunning views from our picnic area, or enjoy the views from the **Benguela Cove Lagoon Wine Estate**.

## S BLUEBELL BANK

The wild beauty of Bluebell Bank will take your breath away as an enchanting carpet of blue and purple stretches across the glade during early spring.

## T CAMELLIA GROVE

Several hundred varieties of camellia, mostly Japanese, were planted here in 1997-98.

## U DEER PARK

Home to a herd of over 100 Sika & Fallow deer.

## MONUMENTAL TREE

*Quercus cambratica*, our enormous Algerian Oak measures at 33.6m tall making it the tallest. Known example of this species in the world.



### KEY

	TOILETS		H & L		SPRING WALK
	GIFT SHOP & GARDEN CENTRE		H		SPRING DETOURS
	CLOCKTOWER KITCHEN & COURTYARD CAFÉ		J & L		ULTIMATE TRAIL
	PLAY PARK: THE HUT		G		VIEW POINT
	LEONARDSLEE HOUSE		N		
	ART GALLERY & SCULPTURE SALES		L & O		
	FIRST AID / AED MACHINES				
	MAIN PATHS				
	WOODCHIP / GRASS PATHS				
	STEPS				

FREE WIFI AVAILABLE THROUGHOUT THE ESTATE



### SPRING WALK

MEDIUM

Approx. 40 – 50 minutes  
3.4km | ± 3750 steps

### ULTIMATE TRAIL

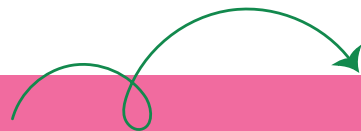
DIFFICULT

Approx. 1hr 30 minutes  
5km | ± 7500 steps

Taking in the spring highlights, this trail passes our **Rock Garden, Engine House Café** and **Bluebell Bank**. Explore our spring detours that pass through **Loderi Garden, Coronation Garden** and **Camellia Grove** to see everything that spring has to offer.

Winding its way through our woodland gardens, this route goes off the beaten track and allows you to experience Leonardslee as you walk along our **seven lakes**, explore our **Top Garden** and some of the most beautiful areas of the garden.

For the accessibility map, please visit [www.leonardsleegardens.co.uk/visitor-information](http://www.leonardsleegardens.co.uk/visitor-information)



## SCULPTURE PARK & ART GALLERY

Leonardslee is a treasure trove of art and nature. Explore beautiful sculptures by **local talents** from **Surrey** and **Sussex**, blended with Anton Smit's acclaimed works from South Africa. Explore the **spring walk** and **spring detours** to fully appreciate the extensive collection of sculptures on exhibit.

Visit the Art Gallery within **Leonardslee House** where smaller-scale works are displayed. All works are available for sale.

Viewing of the Sculpture Park & Art Gallery is included in garden entry.



## A MAGICAL WORLD IN MINIATURE (J)

An incredible journey awaits you as you step inside the **magical world** of the **'Beyond the Dolls' House'** exhibition that is sure to inspire wonder in young minds and delight adults alike.

As you walk through the miniature world, you can explore every nook and cranny in **1:12** scale of the incredible **Edwardian village** and **country estate**.

From the quaint village shops to the rustic farmhouse and grand country home, there are rooms with all sorts of surprises including an art gallery, a drawing room complete with chandelier and sideboard, a post office, butcher, school room and more filled with old-fashioned furniture, toys, books and other period items. Enjoy exploring as if you were really there!



### FUN FACT

Occasionally some of the figures move – sawing timber, scaring granny with a spider, an elevator moving between shops, and a moving toy train in the toy shop.



## VINEYARD & PICNICS

Our beautiful **37-acre vineyard**, follows sustainable practices, with the first release of wine in **June 2024**.

The vineyard sits amongst our **Grade I listed gardens** and is surrounded by breathtaking views of the valley, **Leonardslee House** and **the South Downs**.

### BACK FOR 2024

**Vineyard picnics** give you the chance to enjoy an outstanding, authentic **al fresco picnic experience** amongst the vines, with a mouth-watering picnic menu and selection of **great wines** to choose from.

For less than  
**£1 per  
week\***

**LIVE LIFE IN FULL BLOOM**  
BY BECOMING A MEMBER TODAY!

Support our gardens and the vital conservation work by becoming members of **Leonardslee Lakes & Gardens**. It's fun and helps ensure the future of this special place.

Members enjoy exclusive benefits and discounts throughout the year.

**\*Terms apply | \*Per adult in a joint membership £100pa**



BECOME A MEMBER AND GET **FREE PARKING AND TICKETS TO EVENTS**

#### VOLUNTEER



**Volunteering** to help at Leonardslee is an opportunity to be actively involved in ensuring that this national gem can continue to bring pleasure for generations to come.

#### BUGGY SHUTTLE SERVICE



The **Leonardslee Shuttle Service** is available free of charge for visitors with limited mobility and runs on most days. This service relies on volunteers and is subject to availability.

#### GIFT VOUCHERS



**The perfect gift** for friends or family – treat them to the world of Leonardslee!

Visit our website or contact us for more information.

#### **OPEN DAILY**

PEAK : 31 MARCH - 26 OCTOBER

OFF-PEAK : 27 OCTOBER - 29 MARCH

CLOSED ON CHRISTMAS DAY

#### **LEONARDSLEE IS CASH FREE**

For security and hygiene purposes we do not accept cash.



#leonardsleegardens

www.leonardsleegardens.co.uk | 0330 123 5893 | info@leonardsleegardens.co.uk  
Brighton Road, Lower Beeding, Horsham, RH13 6PP