



LEONARDSLEE  
LAKES & GARDENS

# AUTUMN



Members get

**FREE  
TICKETS**

to **Illuminated**

*T's & C's apply*



Ablaze with pinks, yellows, reds and bronzes, Leonardslee Lakes & Gardens takes on a whole new guise during autumn. Hundreds of varieties of trees can be found throughout the Grade I listed woodland gardens as their leaves turn into a myriad of autumnal colour, creating incredible reflections across our seven lakes.

The gardens are a magical place to visit any time of year, but autumn is particularly special. As the weather cools and the trees begin to change, you'll find yourself surrounded by nature at its finest. This is a time of year when mist settles over the lakes and is pierced by sunlight through the surrounding trees, a mesmerizing theatre that changes daily as light shifts throughout the day.





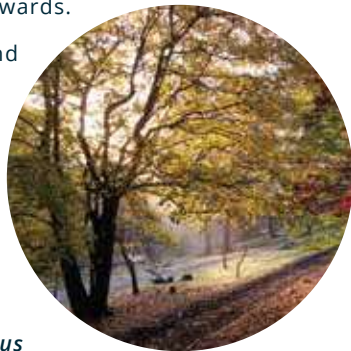
## ACERS (MAPLES)

As one of our feature plants, Acers can be found across the whole garden here at Leonardslee. Commonly known as maples, they provide some of the best autumn leaf colour. There are a few spots in particular that are worth checking out if you want to immerse yourself in maples this autumn.

Visitors can go maple spotting in the Rock Garden (K), where you can find a Japanese Maple *Acer palmatum* 'Seiryu' with its firework display of red, orange and yellow leaves, and British and Irish Champion status for both height and girth.

Another favourite here is above the waterfall: *Acer japonicum* 'Aconitifolium' has intricate leaves which turn red and purple from the margins inwards.

Heading down into the valley, via Bluebell Bank (Q) you will find a collection of beautiful autumnal Acer colour where you'll be treated to stunning views of the valley towards the lakes with paths ablaze with colourful foliage. From the likes of *Acer x zoeschense*, a County Champion with bright yellow foliage, to *Acer buergerianum* with its amazing mix of reds and oranges, there is lots to enjoy as you meander down to the lakes and beyond.



Acer (Maple) Walk (U) itself is an obvious destination and is home to a vast range of many different species and cultivars. There are unusual variegated types, such as *Acer pseudoplatanus* 'Simon-Louis Freres' for instance, plus deep purple foliage trees including *Acer platanoides* 'Crimson King' or *Acer palmatum* 'Sherwood Flame' with its stunning fine-toothed leaves. You'll also find snake bark maples with beautiful trunks and stems, including *Acer davidii* 'Serpentine'.

**DID YOU KNOW?** | Acers are ancient! Dating back to at least 100 million years ago, if not older, and can live for more than 300 years.





# WOODLAND FUNGI

Autumn is a magical time and we are lucky to have an abundance of strange and beautiful fungi around every corner in our woodland gardens.



1



FUNGI WALKS AVAILABLE

Look out for **Chicken-of-the-woods** ①, **Cauliflower fungi** ②, **Snowy Waxcap** ③, **Fly Agaric** ④, **Porcelain fungus** ⑤, and **Trooping Funnel** ⑥ – to name a few!

*When you see these unique organisms, please remember that they are fragile and sensitive. Please don't try to pick them up or disturb them in any way.*



## INTERESTING BARK

This is the time of year when we are treated to the most spectacular displays of bark in our gardens. As the leaves on trees change colour and fall, we get a better look at the bark that was hidden beneath.



The striking patterns and textures of bark make it one of the most fascinating parts of a tree. From the rippled Beech bark to the attractive crisp white, peeling Birch bark, step up and take a closer look at this niche in the woodlands ecosystem that protects our trees, creates a unique habitat and even provides food for wildlife.

### DID YOU KNOW?

There's more to bark than meets the eye. Bark is similar to our own skin and is essential to a tree's survival; it keeps moisture in and infection out!





## BOUNTIFUL BERRIES

Our berry bushes and trees are bursting with colour, and they're not just pretty to look at. They're a hub of activity, with birds, insects, and other animals coming in to help spread the seeds.



Look out for Rowan trees ①, Hawthorn ② and Guelder-rose berries ③ - especially if you're walking around our lakeside valley. And don't miss the lychee-like fruit from Kousa dogwood trees ④ that Chef Jean Delport from Michelin star Restaurant Interlude uses in various dishes!



## CHAMPION TREES

With hundreds of fantastic trees throughout the 240-acre estate, we are fortunate to have plenty of 'Champions' measured and verified by the British Tree Register.

**DID YOU KNOW?** | A Champion Tree is official recorded as the tallest or thickest of its type. We currently have 29 British and Irish Champions, a further 4 English Champions, over 80 County Champions, and another 14 trees that are designated as 'Remarkable' and may well become future champions.

As you explore the gardens, keep an eye out for their blue plaques.



**Record Breaker:** Our *Quercus canariensis*, or Algerian Oak, has been confirmed as a Monumental Tree and measures at 33.6m tall. This means it is the tallest tree of its type in the world! Our Monumental Algerian Oak can be found by looking for the star on the map of this autumn guide.



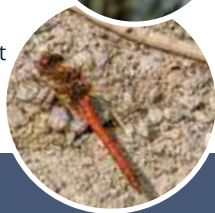


## THE LAKES

Set in the heart of the valley, our seven interlinking lakes have captivated visitors throughout the seasons. Autumn is no different as leaves turn to their incredible autumnal colours, enchanting viewers with picturesque reflections and rippling activity beneath and above the water surface. The shapes of the neighbouring and overhanging trees, in all their autumn finery, create stunning mirror images and beautiful visuals for photography.



A few dragonflies will still be on the wing to the end of autumn; Common Darters are often seen basking on paths by the lakes into November, whilst dainty Willow Emerald Damselflies only start to emerge in late August and can be spotted floating around the weeping willows through to October.



Share your images with us on social media using the tag @leonardsleegardens #leonardsleegardens



## ROCK GARDEN

Our famous Rock Garden (K), built in 1890 is a favourite attraction for visitors with its distinct colours and textures. During autumn, the Rock Garden turns into a sea of greens, blues and yellows with lichens and moss creating fascinating shapes and colours on the Pulhamite rocks.

The Rock Garden fell in with the Victorian trend and was designed to look like natural rock and features unique Pulhamite rock formations with a hidden stone lion, a sculpture of Pleiades and a waterfall.







## WALLABIES



Leonardslee is home to both free-roaming wallabies and wallabies in the maternity enclosure (O) to keep the young joeys safe.

Our colony of winter-hardy Bennett's Wallabies are descendants of the original herd brought here by Sir Edmund Loder in 1889. They spend their mornings enjoying the autumn and winter sun with their thick, warm coats before foraging in the gardens.

### DID YOU KNOW?

Bennett's Wallabies, also called Red-necked Wallabies, are members of the macropod family, which also includes kangaroos & wallaroos.



## TOP GARDEN & DEER PARK

The Top Garden (E) and adjoining Deer Park (S) is another place to explore and discover with its magnificent views and captivating scenery.

The Top Garden was the original site of a Pinetum and was first planted by Sir Edmund Loder between 1901 and 1905. Unfortunately, most of the trees were lost during the great storm of 1987 that affected so much of this part of the country.

Today, the Top Garden is a haven for wildlife, with badgers and hares regularly seen and a host of other mammals, birds and insects. You might even spot a wild wallaby if you're lucky!

The Deer Park falls directly south of Leonardslee House and covers 70-acres, and includes our largest and oldest lake, New Pond.

This is a much wilder part of the estate than the rest of the gardens, having been a deer park since the nineteenth century, although it has been planted with many specimen trees, including a large collection of conifers.

The conifer trees in our Pinetum are a collection of many different conifer species and cultivars from around the world, some of which are rare and unusual.

The Deer Park is home to free-roaming deer, including Sika and Fallow Deer. As well as our free-roaming wallabies, which you might see grazing under trees or on the banks, especially our albino wallabies that provide a stark contrast against the amber colour of the grassy banks and golden bracken.

### DID YOU KNOW?

Sika deer antlers are covered with soft velvet as they grow, but with the approach of the mating season, the velvet peels off exposing the sharp bone.

### FUN FACT

Fallow deer have four main variations of coat: Common (tan and fawn), Menil (paler colouration), Melanistic (black), and White.



## RUTTING SEASON

Every autumn, keep an eye out for the deer rutting as young stags and bucks compete to attract a harem of females.

During mating season, stags become more aggressive and will bellow out a call or engage in physical combat.

This magnificent sight is one to observe from a safe distance with any dogs securely on a lead at all times.



## BIRDLIFE

The combination of seven undisturbed lakes and extensive woodland means that Leonardslee is particularly rich in a range of interesting and scarce birdlife.

With the change in seasons, we will say farewell to some migratory birds as they head south for the winter, but we also welcome birds arriving from the far north to spend the winter in our woodlands.

Fieldfares and Redwings are two thrushes that take shelter in the valley, and flocks of finches such as Siskins, Lesser Redpolls and Chaffinches feed on seed in the treetops. There's always lots to see at this colourful time of year. Leonardslee provides a peaceful and unspoiled environment where nature thrives and is home to an extraordinary range of wildlife, including several endangered species.

**DID YOU KNOW?** | 1 in 4 birds in the United Kingdom are on the Red List of Conservation Concern, with 67 species in total.



**Yellowhammer**  
*Emberiza citrinella*



**Marsh Tit**  
*Poecile palustris*



**Grey Wagtail**  
*Motacilla cinerea*



**Mistle Thrush**  
*Turdus viscivorus*



**Song Thrush**  
*Turdus philomelos*



## OUR BIRD HIDE

Our bird hide (T) is a beautiful space to get up close to sit and listen to the birds that call Leonardslee home with minimal disruption.

With a recorded 65 different bird species, there's plenty to see!

The structure was built with wood from our gardens, and we've ensured it's comfortable and safe for you and your family to enjoy. We welcome you to come and take a moment to watch the incredible birdlife we have here.





Members receive priority booking and free or discounted tickets to events!\*

Visit [www.leonardsleegardens.co.uk/all-events](http://www.leonardsleegardens.co.uk/all-events)



## WORKSHOPS & MORE

Autumn is finally here, and we have a host of workshops to enjoy during the season. Learn a new skill with our botanical illustration workshops, autumn macramé, comedy nights and winter wreath making and more. We have a variety of workshops aimed at kids and adults alike, so there's something for everyone!

*View our full list of upcoming events & workshops online.*

## WALKS & WELLNESS EVENTS

Our wellness classes and walks are an opportunity for you to step inside our beautiful grounds, soak in some of the sights and sounds of nature around us, and experience everything we have to offer that will help you connect with nature. You'll be able to enjoy a series of classes, forest bathing, tree walks and more—all while relaxing in our luxurious surroundings.

*View our full list of upcoming events & workshops online.*

## HALLOWEEN AT LEONARDSLEE 21 - 31 OCTOBER

Discover the story of Merlin the wizard and Adria the wicked witch.

A tale of timeless magic and wonder and the key to unlocking its mystery can be found along our pumpkin trail... and see if you can stop Adria the wicked witch from stealing the beauty of Leonardslee.

Perfect for all witches and wizards big or small.

*FREE for members | Included in garden entry | FREE for under 5's*



## LEONARDSLEE ILLUMINATED 24 NOVEMBER - 21 DECEMBER

Walk through the beautiful grounds of Leonardslee Lakes & Gardens as they come to life with spellbinding illuminations, large-scale projections, and sound.

*Prices from Adults (aged 16+) £16 | Children (aged 2 - 15) £10 | Free for children under 2*

**FREE  
TICKETS**  
for Leonardslee  
members  
T's & C's apply



Restaurant



Interlude  
AT LEONARDSLEE GARDENS



Dine in the beauty of Leonardslee House, open all year round and enjoy seasonal cuisine, including foods foraged from the gardens.



Thursday - Sunday | 18:00 onwards  
[www.restaurant-interlude.co.uk](http://www.restaurant-interlude.co.uk)

AFTERNOON TEA

LEONARDSLEE  
HOUSE

10%  
DISCOUNT  
for Leonardslee  
members



# HALLOWEEN AFTERNOON TEA

Feast on seasonal favourites with a Halloween Afternoon Tea experience at Leonardslee House this autumn.

Thursday - Sunday | 13:00 - 16:00  
*Garden entry included*

STAY

LEONARDSLEE  
HOUSE



Ten bespoke rooms, each with their own individual décor and en-suite bathrooms.

0871 8733 363  
[www.leonardsleegardens.co.uk](http://www.leonardsleegardens.co.uk)



MANNINGS HEATH ESTATE



Our sister venue boasts beautiful views and is the perfect setting for your special day. With its newly decorated **banqueting suite**, overlooking **stunning grounds**, it's a sensational venue to say 'I Do'.

Contact [weddings@manningsheath.com](mailto:weddings@manningsheath.com) to book your wedding tour today

[www.manningsheath.com](http://www.manningsheath.com)  
Hammerpond Road, Horsham, West Sussex, RH136PG



# LIVE LIFE IN FULL BLOOM BY BECOMING A MEMBER TODAY!



For less than  
**£1 per  
week\***

Support our gardens and the vital conservation work by becoming members of **Leonardslee Lakes & Gardens**. It's fun and helps ensure the future of this special place.

**Leonardslee members receive free tickets to our major sell-out events!**\* Members enjoy exclusive benefits and discounts throughout the year.

*\*Terms apply | \*Per adult in a joint direct debit membership*



**JOIN TODAY AT  
RECEPTION and get  
your garden entry  
REFUNDED!**

## VOLUNTEER



Volunteering to help at **Leonardslee** is an opportunity to be actively involved in ensuring that this national gem can continue to bring pleasure for generations to come.

## BUGGY SHUTTLE SERVICE



The **Leonardslee Shuttle Service** is available free of charge for visitors with limited mobility and runs on most days. This service relies on volunteers and is **subject to availability**.

## GIFT VOUCHERS



The perfect gift for friends or family - treat them to the world of **Leonardslee!**

Visit our website or contact us for more information.

## OPEN DAILY

### OFF-PEAK:

29 OCTOBER - 30 MARCH  
9AM - 4PM  
LAST ENTRY 3:30PM

### PEAK:

31 MARCH - 26 OCTOBER  
9AM - 5PM  
LAST ENTRY 4:30PM

### CLOSED ON CHRISTMAS DAY

## LEONARDSLEE IS CASH FREE

For security and hygiene purposes we do not accept cash.



@leonardsleegardens

www.leonardsleegardens.co.uk | 0871 8733 389 | info@leonardsleegardens.co.uk  
Brighton Road, Lower Beeding, Horsham, RH13 6PP



# LEONARDSLEE LAKES & GARDENS

## A SEVEN LAKES

Our gardens are set within a tranquil valley, at the heart, a series of seven lakes play host to an array of wildlife.

## B MEMORIAL TABLE

Make your way to the Memorial Table for one of the most spectacular views across the gardens.

In memory of Sir Edmund Loder, the table bears the inscription "In memory of Sir Edmund Loder who made and loved these gardens 1889-1920."

## C THE DELL

Don't miss the famous Dell for outstanding views across the valley.

The Dell is home to a 35ft Cornish Red Rhododendron planted in the 1800s.

## D CORONATION GARDEN

Planted in 1952 to mark the coronation of Queen Elizabeth II.

This garden features many Rhododendron Loderi hybrids.

## E TOP GARDEN

Newly reopened, the Top Garden was the original site of a Pinetum.

Planted by Sir Edmund Loder between 1901 and 1905, most of the trees were unfortunately lost during the great storm of 1987 that affected so much of this part of the country.

## F LODERI GARDEN

With a magical feel, this is the oldest part of the garden, with large old rhododendrons, giant conifers & hidden palm trees.

## G DAFFODIL LAWN

A carpet of golden daffodils covers the slopes of Leonardslee from early March. Offers a fine view across the valley towards Mossy Ghyll Pond.

## I DOLLS' HOUSE MUSEUM

A magical world in miniature awaits you at the famous "Beyond The Dolls' House" exhibition.

## K ROCK GARDEN

Created in 1900, our famous Rock Garden is one of the most beautiful areas of the gardens.

## MONUMENTAL TREE

*Quercus canariensis*, our enormous Algerian Oak measures at 33.6m tall making it the tallest known example of this species in the world.

## L LEONARDSLEE HOUSE

The stunning Italianate house is home to Restaurant Interlude, afternoon tea, art gallery & sculpture sales and our ten boutique en-suite rooms.

## M ENGINE HOUSE

The Engine House once pumped water up to the top of the valley. It is a stunning spot for views across the lakes.

Seasonal refreshments are available.

## N CAMELLIA WALK

A pretty walk, noteworthy for its incredible colour and palm trees.

This area includes an interesting group of piers including *Japonica variegata* and *piers Wakehurst*.

## O WALLABY ENCLOSURE

Make sure to visit baby joeys and their mums in the wallaby enclosure.

**FEEDING TIME:**  
12:00 - 12:15 daily

## P VINEYARD

Our first vines were planted in 2017. With our first English Sparkling Wines due for release in 2024.

Whilst our vines are maturing, why not enjoy a wine tasting from our sister property in South Africa, Benguela Cove Lagoon Wine Estate.

## Q BLUEBELL BANK

The wild beauty of Bluebell Bank will take your breath away as an enchanting carpet of blue and purple stretches across the glade during early spring.

## R CAMELLIA GROVE

Several hundred varieties of camellia, mostly *Japonica*, were planted here in 1957-58.

## S DEER PARK

Home to a herd of over 100 Sika & Fallow deer.

## T BIRD HIDE

The perfect spot to sit and listen to the birds that call Leonardslee home.

## U OAK & ACER WALK

A visit during autumn is a must, you'll be treated to stunning views of the valley towards the lakes with paths ablaze with colourful foliage.



## KEY

TOILETS

GIFT SHOP & GARDEN CENTRE

CLOCKTOWER & COURTYARD CAFÉS

LEONARDSLEE HOUSE

FREE WIFI AVAILABLE THROUGHOUT THE ESTATE

H & J

H

J

L



ART GALLERY & SCULPTURE SALES



FIRST AID / AED MACHINES



MAIN PATHS



WOODCHIP / GRASS PATHS



STEPS

L

J & M

AUTUMN WALK

ULTIMATE TRAIL

VIEW POINT

BUGGY PICK UP/  
DROP OFF POINT

L

J & M

AUTUMN WALK

ULTIMATE TRAIL

VIEW POINT

BUGGY PICK UP/  
DROP OFF POINT



## AUTUMN WALK

 MEDIUM

Approx. 40 – 50 minutes | 3.4km | ± 3750 steps

Taking in the seasonal highlights, this trail passes the Rock Garden, Camellia Grove, Oak & Acer Walk and our lakes.

## ULTIMATE TRAIL

 DIFFICULT

Approx. 1hr 30 minutes | 5km | ± 7500 steps

Winding its way through our woodland gardens, this route goes off the beaten track and allows you to experience all that Leonardslee has to offer as you walk along our seven lakes, explore our Top Garden and some of the most beautiful areas of the garden.

For the accessibility map, please visit [www.leonardsleegardens.co.uk/visitor-information](http://www.leonardsleegardens.co.uk/visitor-information) or scan here.



## SCULPTURE PARK & ART GALLERY

Showcasing Anton Smit's contemporary sculpture and life work, this exhibition is one of the UK's largest sculpture parks by one living artist.

50 monumental pieces, in harmony with the woodland gardens and positioned by the artist himself, create new vistas across the valley and our seven lakes.



Grab a sculpture map from reception to follow the trail or visit the Art Gallery within Leonardslee House where smaller scale works are on display. All works are available for sale and can be commissioned in either bronze or GRP.

Viewing of the sculpture park is included in garden entry.



For more information visit [www.antonsmitt.co.uk](http://www.antonsmitt.co.uk)



MEMBERS  
**SAVE**  
**10%\***

Whilst our vines mature, **(P)** explore our wine tasting experiences with award-winning wines from our sister estate, **Benguela Cove Lagoon Wine Estate** in South Africa.

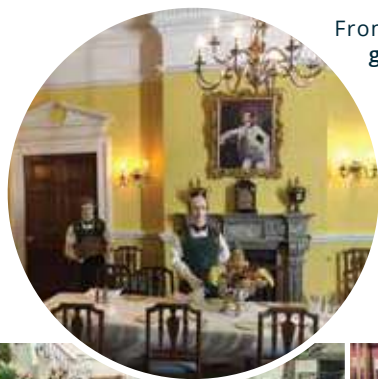
*\*on all wine tasting experiences*



## A MAGICAL WORLD IN MINIATURE

An incredible journey awaits you as you step inside the magical world of the 'Beyond the Dolls' House' exhibition **(I)** that is sure to inspire wonder in young minds and delight adults alike.

As you walk through the miniature world, you can explore every nook and cranny in 1:12 scale of the incredible Edwardian village and country estate.



From the quaint village shops to the rustic farmhouse and grand country home, there are rooms with all sorts of surprises including an art gallery, a drawing room complete with chandelier and sideboard, a post office, butcher, school room and more filled with old-fashioned furniture, toys, books and other period items. Enjoy exploring as if you were really there!

Can you spot the wallaby in the woods, or the turtle in the pen on the lawn, or how about the ghost in the graveyard?



**FUN FACT** | Occasionally some of the figures move – sawing timber, scaring granny with a spider, an elevator moving between shops, and a moving toy train in the toy shop.