



LEONARDSLEE LAKES & GARDENS

S U M M E R



Members get

**FREE
TICKETS**

to **ILLUMINATED**

T's & C's apply



Eastside Walk



During the **summer** months, visitors are invited to explore our **240-acre** estate and witness a colourful display of **late-blooming rhododendrons**, alongside **wildflowers** and **orchids** dusting the meadows and glades in the **Deer Park**.

Summer is the time of year when our spectacular **wildlife** is at its most active. Our diverse collection of **insects**, **birds**, **deer**, and **wallabies** is abundant as they raise their young and take centre stage. Remember to have your camera at hand! There's nothing quite like a **summer walk** surrounded by nature at **Leonardslee Lakes & Gardens**.



HYDRANGEAS

During summer, **hydrangeas** fill the gardens with their white, pink and blue hues and are one of our most popular plants of the season.



Our outdoor display offers a variety of hydrangeas varying in colour but is commonly blue and purple due to the acidic soil conditions at **Leonardslee**.

However, not all **hydrangeas'** colour is determined by the soil's acidity. Most **lacecap** and **mophead** varieties abide by this rule. Visitors may notice that white flowering varieties will remain white, with some getting a tinge of pink or blue towards the end of summer.

At their peak, a beautiful display greets visitors entering the gardens between the **entrance (H)** and the **Courtyard Café (I)**.

FUN FACT

Each colour of hydrangea has a meaning associated with it. Pink means love and sincerity, while blue represents forgiveness and white represents boastfulness. Purple, however, is the colour that stands for abundance and understanding.



FLOWERING DOGWOOD

Look out for *Cornus* (dogwood) trees in full flower across the gardens; you will see many varieties, some with pink, some with white and others with creamy, whitish stripes.

Don't miss a view of a beautiful *Cornus* on the banks between Clapper and Leucothoe Pond as it creates the perfect backdrop for one of Anton Smits sculptures, *Ruth* - found near our Coronation Garden (D).



DID YOU KNOW?

In autumn, the trees produce lychee-like fruit, which Chef Jean Delpont from Michelin star Restaurant Interlude uses in various dishes. The fruit has similar hints of plum and guava.



WILDFLOWERS

In the height of summer, the grassy banks around the lakes and the open areas in the Deer Park are studded with a huge diversity of wildflowers that love our nutrient-poor acid soils.



Around the lake margins look for the tall spikes of Purple Loosestrife, Hemp-agrimony, Meadowsweet and the huge white umbrellas of Hemlock Water Dropwort. On the drier slopes you can find the tiny Skullcap, Tormentil, Goldenrod and Betony alongside the purple masses of Common Heather and Bell Heather.

We also have some rare specialist wildflowers such as the delicate blue Ivy-leaved Bellflower, the damp-loving Bog Pimpernel and the bright yellow Marsh St John's Wort.



RHODODENDRONS

Discover our beautiful collection of late flowering Rhododendrons, many of which have fantastic scent, including the large white blooms of *Rhododendron hemsleyanum*, as well as 'Argosy', 'Polar Bear', *decorum subspecies diaprepes* and the tree-sized *auriculatum* which can be found in the Loderi Garden.



Rhododendron viscosum and *arborescens* also have a strong spicy scent but have smaller, tubular flowers. Visitors can also expect to see the bright red flowers of *Rhododendron 'Tally Ho'* and *griersonianum*, adding a bold splash of colour across the gardens in mid-summer.



CHAMPION TREES

Champion trees are the superheroes of the arboreal world being either the tallest, or with the widest trunk! These unique trees are like natural landmarks that stand out in a crowd, dazzling us with their exceptional size, beauty, and age.

Our champion trees have been officially recorded and verified by the Tree Register, which means that they are the biggest in the county, Britain & Ireland or even the world.



We have over 70 trees with champion status. Look out for their blue plaques through the gardens to identify them.



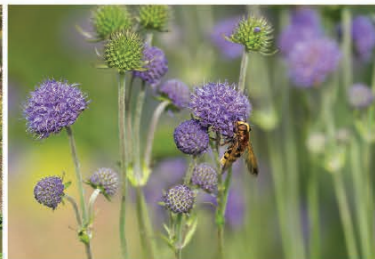
THE LAKES

Set in the heart of the valley, our **seven** interlinking lakes have captivated visitors throughout the seasons. Summer is no different; the lakes enchant viewers with picturesque reflections and rippling activity beneath and above the water's surface.

You may see fish under the water's surface, including giant **Common Carp** and brightly-coloured **Koi Carp**, but we also have smaller species such as **Perch**, **Rudd** and **Minnows**. Sitting in the silt at the bottom of the lakes are large **Swan Mussels**, a freshwater bivalve that filters water for food and is often eaten by some birds that live on the lakes.



In the warmth of the summer sun, **grass snakes** are often seen swimming across the surface. We also have a large number of resident **waterbirds** living on our lakes. If you're lucky, you may catch a glimpse of a **Kingfisher** whizzing past, or a shy **Mandarin Duck** on the water or nesting in tree holes.



There are many areas around the lakes where wildflowers thrive, attracting beautiful insects throughout the summer months. A carpet of dark purple **Devil's-bit Scabious** cover the woodland floor along **Bluebell Bank (Q)**.

DID YOU KNOW?

Our lakes cover around six acres of surface area and hold over ten and a half million gallons of water. Listen to our audio tour to learn more about our lakes' fascinating history.



Share your images with us on social media using the tag **@leonardsleegardens #leonardsleegardens**



ROCK GARDEN

The famous **Rock Garden (K)**, built in 1890, features rich seasonal displays of foliage of **Acers, Conifers** and **Palms** in shades of green, blue and red. See the *Crinodendron hookerianum*'s red lantern flowers and **rhododendrons** with their velvet *indumentum* coating in a tawny brown colour and hairy blue-tinged leaves.

The **Rock Garden** fell in with the **Victorian trend** and was designed to look like natural rock and features unique **Pulhamite rock formations** with a hidden stone lion, a sculpture of **Pleiades** and a **waterfall**.



Visitors can enjoy standing amidst the seasonal colour, listening to the peaceful sound of water cascading down through the rock on a bright summer's day.

Our **Rock Garden** offers you a place to pause during your busy day and embrace a deeper connection with nature.





TOP GARDEN & DEER PARK



The **Top Garden (E)** and adjoining **Deer Park (S)** is another place to explore and discover with its magnificent views and captivating scenery.

The **Top Garden** was the original site of the **Pinetum** and was first planted by **Sir Edmund Loder** between **1901** and **1905**. Most of the trees were unfortunately lost during the **great storm of 1987** that affected so much of this part of the country. The **conifer trees** in our **Pinetum** are a collection of many different conifer species and cultivars from around the world, some of which are rare and **unusual**.



Today, the **Top Garden** is a haven for **wildlife**, with **badgers** and **hares** regularly seen and a host of other **mammals**, **birds** and **insects**. You might even spot a **wild wallaby** if you're lucky!



The **Deer Park** falls directly south of **Leonardslee House** and covers **70-acres** and includes our largest and oldest lake, **New Pond**. This is a much wilder part of the estate than the rest of the gardens, having been a **deer park** since the nineteenth century, although it has been planted up with many specimen trees, including a large collection of **conifers**.

The **Deer Park** is home to over **100 free-roaming deer**, including **Sika** and **Fallow Deer**. As well as our **free roaming wallabies**, which you might see grazing under the trees or resting amongst the bracken.



WILDLIFE

The combination of **seven undisturbed lakes**, extensive **woodland** and rich **wildflower grassland** means that **Leonardslee** is particularly rich in a range of **interesting and scarce wildlife**.

The main highlight of the summer is the large diversity of **insect life** – particularly the **24 different species of dragonflies** and **damselies** that can be found around our lakes.

See how many you can spot – from the huge blue-and-green **Emperor**, tiny needle-thin **Azure Damselflies**, perhaps a powdery-blue **Scarce Chaser** resting on a leaf, or even a rare **Brilliant Emerald** shimmering an electric green in the sunshine.



Look for butterflies in the dappled light of the woods; **Silver-washed Fritillaries**, **White Admirals**, **Purple Hairstreaks**, **Small Skippers** and **Speckled Woods** can all be seen here. The peaceful woods in **Top Garden** are an excellent spot to watch for **butterflies** gliding through the glades.

In the height of **summer**, birds are busy raising their young. Around **Bluebell Bank**, keep a sharp eye out for a **Spotted Flycatcher** darting out from a branch to snap up insects in mid-air, or walk through the **Deer Park** for a chance of seeing **Yellowhammers**, **Goldcrests**, **Green Woodpeckers** or a **Buzzard** soaring overhead.

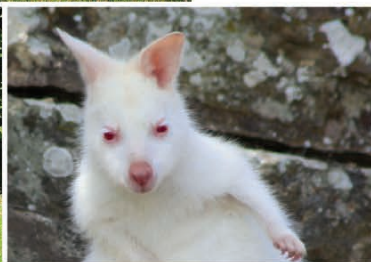


JOEY WATCH

Our joeys are growing up fast and are almost too big for their pouch! Visit the **wallaby enclosure (O)** to see them growing up first hand as they explore and try new things around them.

WALLABY FEEDING TIMES:

12:00 – 12:15



DID YOU KNOW?

Leonardslee has free-roaming wallabies too! Catch them grazing on **Bluebell Bank** or in the **Deer Park**.



A MAGICAL WORLD IN MINIATURE

Step inside and discover the famous 'Beyond the Dolls' House' exhibition.

Created in 1:12 scale, the extensive exhibition has captivated the hearts and imagination of visitors young and old. Showcasing rural scenes from the country estate in the 1900s, it was designed and built with a real sense of fun!



PICNICS

GARDEN PICNICS

Set in our 240-acre woodlands surrounded by beautiful blooming gardens and seven interlocking lakes, **Leonardslee Lakes & Gardens** is the ideal location for the perfect picnic.

With three indulgent picnics to choose from, collect from our **Clocktower Café** to enjoy in our gardens at your leisure, let us take the hassle out of your visit.



All picnics must be pre-booked at least 24 hours in advance

BACK FOR 2023

VINEYARD PICNICS

Vineyard picnics give you the chance to enjoy an outstanding, authentic al fresco picnic experience **amongst the vines**, with a mouth-watering picnic menu and selection of **great wines** to choose from.

Visit www.leonardsleegardens.co.uk to preorder your picnic online.



VINEYARD

In 2018, the first commercial Pinotage vines were planted in the UK at **Leonardslee Lakes & Gardens**.

MEMBERS
SAVE
10%*

Whilst our vines mature, explore our wine tasting experiences with award-winning wines from our sister estate, **Benguela Cove Lagoon Wine Estate** in South Africa.

**on all wine tasting experiences*

SCULPTURE PARK & ART GALLERY

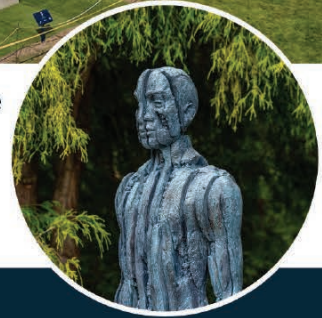
Showcasing Anton Smit's contemporary sculpture and life works, this exhibition is one of the **largest sculpture parks in the UK** by one single, living artist.

Several monumental pieces, in harmony with the woodland gardens, positioned by the artist himself create new vistas across the valley and our **seven lakes**.



Grab a sculpture map from reception to follow the trail or visit the **Art Gallery** within **Leonardslee House** where smaller scale works are on display. All works are available for sale and can be commissioned in either **bronze** or **GRP**.

Viewing of the **sculpture park** is included in **garden entry**.



For more information email art@leonardsleegardens.co.uk

GARDEN WALK



MEDIUM

Approx. 40 – 50 minutes | 3.4km | ± 3750 steps

Taking in our garden highlights, this trail passes our **Loderi Garden**, **Engine House Café** and **Bluebell Bank**.

ULTIMATE TRAIL



DIFFICULT

Approx. 1hr 30 minutes | 5km | ± 7500 steps

Winding its way through our woodland gardens, this route goes off the beaten track and allows you to experience all that **Leonardslee** has to offer as you walk along our **seven lakes**, explore our **Top Garden** and some of the most beautiful areas of the garden.

For the accessibility map, please visit www.leonardsleegardens.co.uk/visitor-information or scan here.



AUDIO TOURS



Unearth the **story** of our garden and experience more on your visit with our informative audio tours.

Discover more about our **gardens**, **history**, **magical world** in miniature, **art gallery** and **sculpture garden** and more!

Visit www.leonardsleegardens.co.uk/what-to-see-and-do or scan this code to download the app and listen to our audio tours.





LEONARDSLEE LAKES & GARDENS



A SEVEN LAKES

Our gardens are set within a tranquil valley; at the heart, a series of seven lakes play host to an array of summer loving wildlife.

B MEMORIAL TABLE

Make your way to the Memorial Table for one of the most spectacular views across the gardens.

In memory of Sir Edmund Loder, the table bears the inscription "In memory of Sir Edmund Loder who made and loved these gardens 1889-1920."

C THE DELL

Don't miss the famous Dell for outstanding views across the valley.

The Dell is home to a 35ft Cornish Red Rhododendron planted in the 1800s.

D CORONATION GARDEN

Planted in 1952 to mark the coronation of Queen Elizabeth II.

This garden features many Rhododendron Loderi.

E TOP GARDEN

Newly reopened, the Top Garden was the original site of a Pinetum.

Planted by Sir Edmund Loder between 1901 and 1905, most of the trees were unfortunately lost during the great storm of 1987 that affected so much of this part of the country.

F LODERI GARDEN

With a magical feel, this is the oldest part of the garden, with large old rhododendrons, giant conifers & hidden palm trees.

Worth a detour for rhododendron enthusiasts.

G DAFFODIL LAWN

A carpet of golden daffodils covers the slopes of Leonardslee from early March. Offers a fine view across the valley towards Mossy Ghyll Pond.

I DOLLS' HOUSE MUSEUM

A magical world in miniature awaits you at the famous 'Beyond The Dolls' House' exhibition.

★ MONUMENTAL TREE

Quercus canariensis, our enormous Algerian Oak measures at 33.6m tall making it the tallest known example of this species in the world.

K ROCK GARDEN

Created in 1900, our famous Rock Garden is one of the most beautiful areas of the gardens.

L LEONARDSLEE HOUSE

The stunning Italianate mansion house is home to Restaurant Interlude, Leonardslee House Stay & Afternoon Tea, and Art Gallery & Sculpture Sales.

M ENGINE HOUSE

The Engine House once pumped water up to the top of the valley. It is a stunning spot for views across the lakes.

Seasonal refreshments are available.

N CAMELLIA WALK

A pretty walk, noteworthy for its incredible colour and palm trees.

This area includes an interesting group of piers including *Japonica variegata* and piers *Wakehurst*.

O WALLABY ENCLOSURE

Make sure to visit baby joeys and their mums in the wallaby enclosure.

FEEDING TIME:
12:00 - 12:15 daily

P VINEYARD & PICNICS

In 2018 we planted the UK's first Pinotage Vineyard.

Whilst our vines are maturing, why not enjoy a wine tasting from our sister property in South Africa, Benguela Cove Lagoon Wine Estate.

Seasonal picnics are available.

Q BLUEBELL BANK

The wild beauty of Bluebell Bank will take your breath away as an enchanting carpet of blue and purple stretches across the glade during early spring.

R CAMELLIA GROVE

Several hundred varieties of camellia, mostly *Japonica*, were planted here in 1957-58.

S DEER PARK

Home to a herd of over 100 Sika & Fallow deer.

T BIRD HIDE

The perfect spot to sit and listen to the birds that call Leonardslee home.

KEY

TOILETS

GIFT SHOP & GARDEN CENTRE

CLOCKTOWER & COURTYARD CAFÉS

LEONARDSLEE HOUSE

FREE WIFI AVAILABLE THROUGHOUT THE ESTATE

H & J

H

J

L

ART GALLERY & SCULPTURE SALES

FIRST AID / AED MACHINES

MAIN PATHS

WOODCHIP / GRASS PATHS

STEPS

L

J & M

SPRING WALK

ULTIMATE TRAIL

VIEW POINT

BUGGY PICK UP/
DROP OFF POINT





Members receive priority booking and discounts to events!

SURREY SCULPTURE SOCIETY | 14 JULY - 27 AUGUST

Back with their annual summer sculpture trail at Leonardslee. View over 70 sculptures from local artists along the woodland trail.

Free for members | Garden entry required for non-members



SUMMER AT LEONARDSLEE | 22 - 30 JULY

We're excited to announce the launch of our new event which will be packed with entertainment, activities, and delicious food. From circus acts to mindfulness experiences, there's something for everyone to enjoy. Join us for a week of garden games on the lawn and dancing with the deer. We've curated the perfect selection of adventures for you to discover around the gardens.

Free for members | Garden entry required for non members | Booking Essential

OPEN AIR CINEMA | AUGUST - SEPTEMBER

A series of summer evenings, watching outdoor cinema beside Leonardslee House.

**12 Aug - Dirty Dancing | 26 Aug - Bohemian Rhapsody | 2 Sep - The Dark Knight
16 Sep - Harry Potter and the Prisoner of Azkaban**

1000FT LONG INFLATABLE OBSTACLE COURSE | 17 - 20 AUGUST

Dodge through swinging blades, leapfrog over hurdles and bolt to the finishing line. We challenge any thrill seeker to this adventure of a lifetime, suitable for all ages.

**Adults £22.50 | Children £10.50 (2 - 16) | Under 2's Free
50% off for Leonardslee Members**

Free garden entry included, garden entry required for spectators.



LEONARDSLEE ILLUMINATED | 24 NOVEMBER - 21 DECEMBER

Walk through the beautiful grounds of Leonardslee Lakes & Gardens as they come to life with spellbinding illuminations, large-scale projections, sound & colour.

Become a Leonardslee member and get a FREE TICKET to Leonardslee Illuminated

Restaurant



Interlude

AT LEONARDSLEE GARDENS



Dine in the beauty of **Leonardslee House**, open all year round and enjoy seasonal cuisine, including foods foraged from the gardens.



Thursday – Sunday | 18:00 onwards
www.restaurant-interlude.co.uk

MANNINGS HEATH
GOLF & WINE ESTATE



ONLY
3 MILES
AWAY!



Our sister venue boasts beautiful views across the South Downs. Relax and enjoy breakfast, cream tea, wine tastings, a round of golf or a hot lunch before or after your visit to the gardens. Make a day of it!

www.manningsheath.com

Hammerpond Road, Horsham,
West Sussex, RH136PG



AFTERNOON TEA

LEONARDSLEE HOUSE

Members receive a
10% discount



Enjoy an afternoon tea with seasonally inspired pastisseries, and spectacular views; this is a spring treat you do not want to miss.

Thursday – Sunday | 13:00 –16:00
afternoontea@leonardsleegardens.co.uk

STAY

LEONARDSLEE HOUSE



Ten bespoke rooms, each with their own individual décor and en-suite bathrooms.

0871 8733 363
www.leonardsleegardens.co.uk

LIVE LIFE IN FULL BLOOM BY BECOMING A MEMBER TODAY!

Support our gardens and the vital conservation work by becoming members of **Leonardslee Lakes & Gardens**. It's fun and helps ensure the future of this special place.

Members enjoy exclusive benefits and discounts throughout the year.

**Terms apply | *Per adult in a joint direct debit membership*

SAVE
up to 25%
when paying
by direct
debit

For less than
**£1 per
week***

Become a member on the day and get your garden entry refunded.

VOLUNTEER



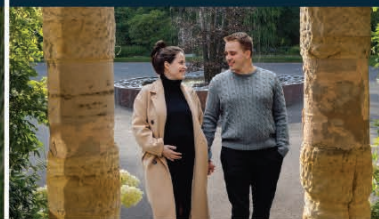
Volunteering to help at **Leonardslee** is an opportunity to be actively involved in ensuring that this national gem can continue to bring pleasure for generations to come.

BUGGY SHUTTLE SERVICE



The **Leonardslee Shuttle Service** is available free of charge for visitors with limited mobility and runs on most days. This service relies on volunteers and is **subject to availability**.

GIFT VOUCHERS



The perfect gift for friends or family – treat them to the world of **Leonardslee**! Choose from **Afternoon Tea at Leonardslee House**, **Restaurant Interlude** or experience vouchers for the ultimate **Leonardslee** experience.

Visit our website or contact us for more information.

OPEN DAILY

PEAK :

26 MARCH - 29 OCTOBER
9AM - 5PM
LAST ENTRY 4:30PM

OFF-PEAK :

30 OCTOBER - 31 MARCH
9AM - 4PM
LAST ENTRY 3:30PM

CLOSED ON CHRISTMAS DAY

LEONARDSLEE IS CASH FREE

For security and hygiene purposes we do not accept cash.



#leonardsleegardens

